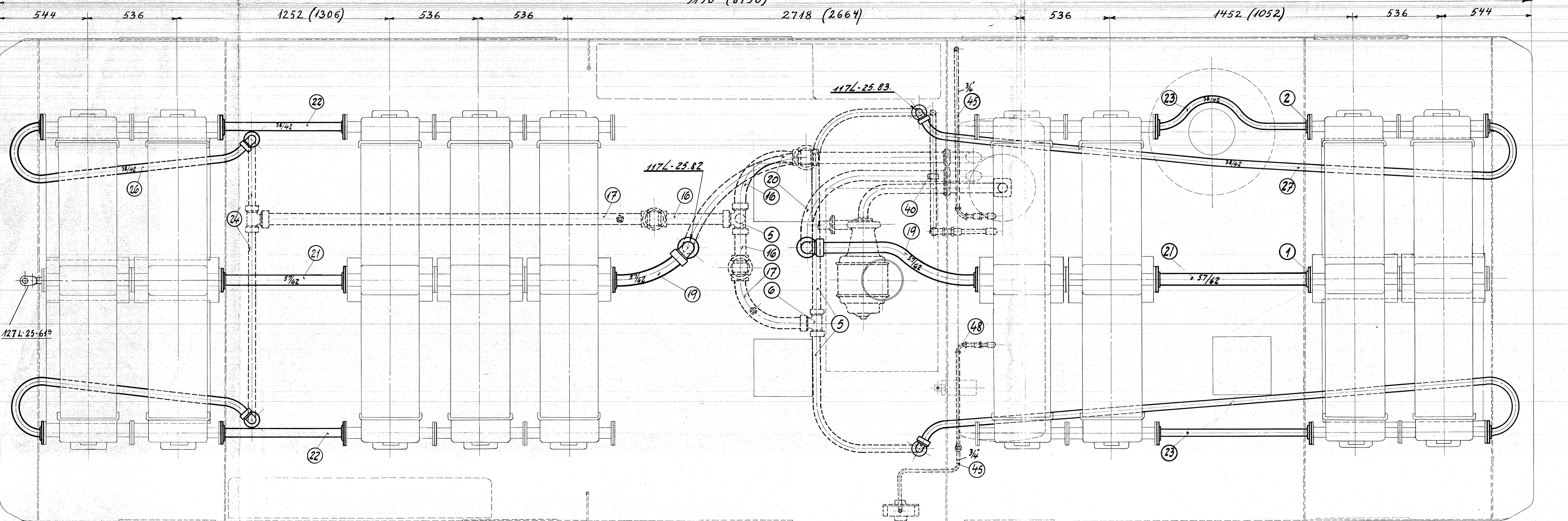
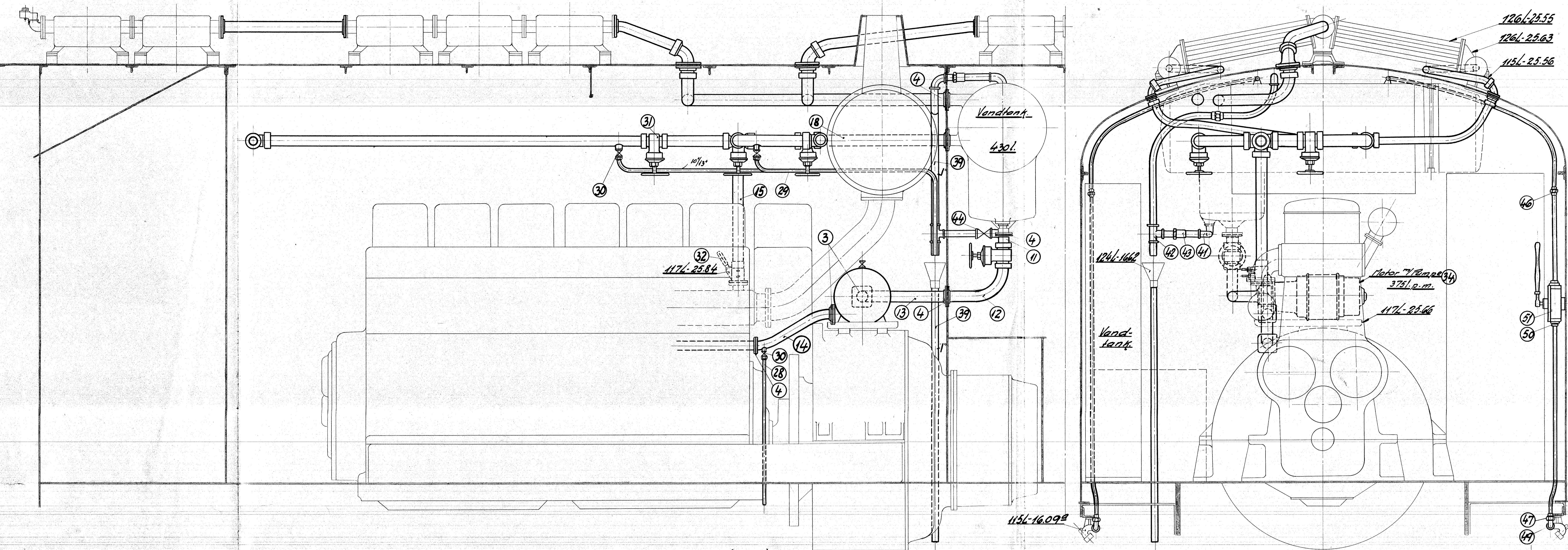


55182

INDTEGNELSE

1	6	Flange 140 for 3/2" metal 163	68P. 162
2	12	do " " 3/2" "	68P. 162
3	2	do Fr. 16x10 3/2" "	18P. 184
4	6	do " 16x10 3/2" "	18P. 184
5	1	Thytte Udvend 3/2" Brønd	66P. 28
6	2	Thytte for 1 1/2" 3/2" "	66P. 28
7	18	Smider 40x38 for 3/2" "	68P. 284
8	12	do " 42x42 " 3/2" "	3X-17
9	18	Smider 40x38 for 3/2" "	68P. 284
10	12	do " 42x42 " 3/2" "	3X-14
11	1	For fra Tank Ventil 1600	3/2" x 100
12	1	do " Ventil - Rørgæ "	" x 500
13	1	do " Flange - Rørgæ "	" x 800
14	1	do " Rørgæ - Motor "	" x 600
15	1	do " Termom. T. "	" x 700
16	3	do " Ventil " 100mm "	x 1200
17	2	do " Ventil - T. "	" x 3600
18	1	do " " Tank "	" x 900
19	2	do " 1100 " Koler - Tagg "	" x 1000
20	2	do " 1100 " Tagg - Tank "	" x 3300
21	2	do " 1100 " Koler " Koler "	" x 1700
22	2	For a 750 " " " "	3/2" x 1500
23	2	do " 1100 " " " " "	" x 2000
24	2	do " 1100 " T " Tagg "	" x 2000
25	2	do " 1100 " " " " "	x 3100
26	2	do " 1100 " Tagg - Koler "	" x 3600
27	2	do " 1100 " " " " "	" x 8200
28	1	For Affjævn. forber. " 100mm "	x 1000
29	2	do " 1100 " " " " "	" x 4400
30	3	Affjævn. forber. " 100mm "	Tagg
31	4	Stydeventiler 2 1/2" 1600mm "	Best.
32	1	Termometer 163 "	Tagg
33	2	Termometer led. 160mm "	Best.
34	1	Centrifugalpumpe 160mm "	Best.
35	18	Bolte 1/2" 40 sorte "	Tagg
36	18	Bøjninger 140x115 "	"
37	2	do " 110x110x115 "	"
38	7	do " 108x115 "	"
39	1	Vort for samles 1" L. 45mm "	"
40	1	Union 1" G.F. "	"
41	2	Vinkel 1" " " "	"
42	1	T. Thytte 1" " " "	"
43	2	Langgev. 1" " " "	"
44	1	Stydeventil 1" " " "	Best.
45	1	Vort for 3/2" L. 70mm "	Tagg
46	3	Unioner Indv. 3/2" " " "	"
47	2	do " " 3/2" " " "	"
48	2	Vort Bøjning 3/4" " " "	"
49	2	Form. Tuffe 3/4" " " "	"
50	2	Nippel Tuffe 3/4" " " "	"
51	1	Vinge pumpe 1" 160mm "	Best.



Efter oprindelige Maal. 2 Stk. - Ord. N° 50555 - Lolland-Falsters Jernbane. - Decbr. 1933
 " () " 2 Stk. - Ord. N° 51444 - Raiborg Privatbaner. - Decbr. 1933

Anordning af Tagkoler med
 Forledninger. Diesel. 400 Watt. 160 mm

C.T.N.	1:10	128L-25.64
27/11/1933		